



*live
small*
without compromise

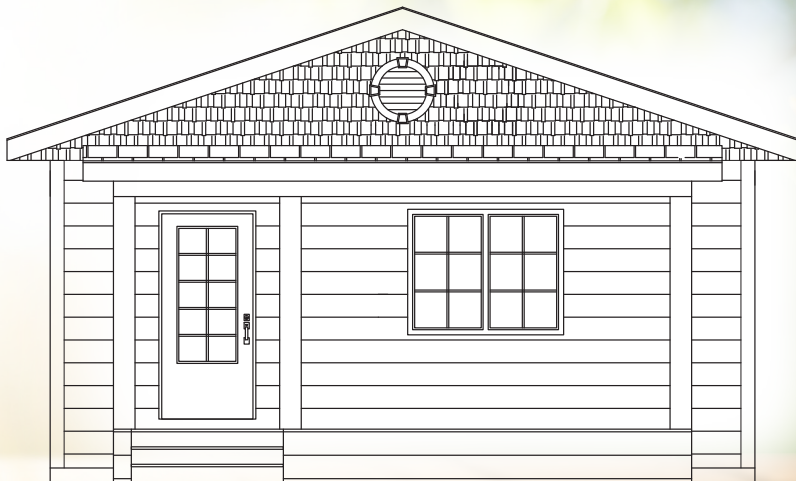
Brandon's *first*
pocket neighbourhood

**Spacious +
Comfortable**

The **Wild Rose** has ample space for living, featuring a combined living/dining area, kitchen with island and breakfast bar, and room for full-sized appliances.

WILD ROSE

SMALL HOME



glendalehomes.ca

WILD ROSE

TWO BEDROOMS — 920 SF

ENERGY-EFFICIENT DESIGN

- Enhanced insulation: warm in winter and cool in the summer
- Triple-pane windows
- High-performance heating, air conditioning and ventilation with digital controls
- LED Lighting

NO COMPROMISES

- Fits full-sized kitchen appliances
- Solid pile foundation

- Drywall finish throughout
- Luxury vinyl plank flooring
- Custom cabinets with soft-close drawers
- Quality Kohler fixtures and Delta faucets

PREMIUM EXTERIOR

- Low maintenance
- High-density wood fibre siding
- Covered front porch
- Composite decking
- 8'x10' storage shed included with lot



260 Glen Avenue
Brandon, Manitoba R7C 1B9
glendalehomes.ca

CENTURY 21

Westman Realty Ltd.

Lisa Letain

CELL: 204-730-5202

OFFICE: 204-725-0555

lisa.letain@century21.ca

