



*live  
small*  
*without compromise*

---

Brandon's *first*  
pocket neighbourhood

---

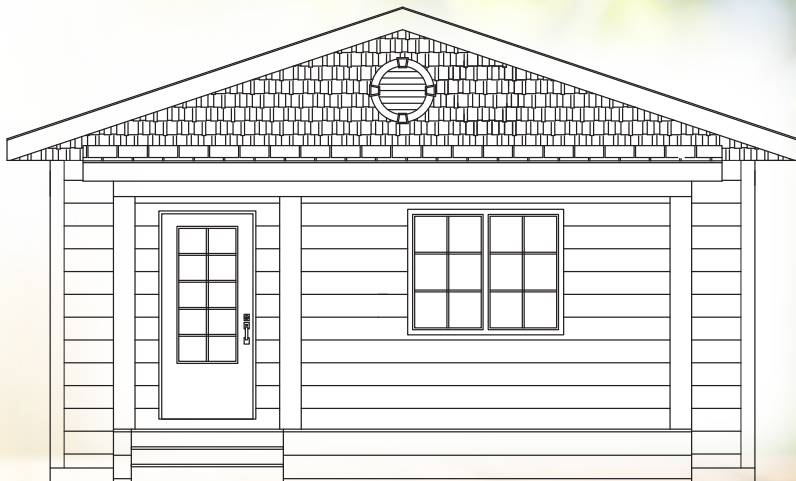
**Spacious +  
Comfortable**

The **Wild Rose** has ample space for living, featuring a combined living/dining area, kitchen with island and breakfast bar, and room for full-sized appliances.

# WILD ROSE

---

## SMALL HOME



[glendalehomes.ca](http://glendalehomes.ca)

# WILD ROSE

TWO BEDROOMS — 920 SF

## ENERGY-EFFICIENT DESIGN

- Enhanced insulation: warm in winter and cool in the summer
- Triple-pane windows
- High-performance heating, air conditioning and ventilation with digital controls
- LED Lighting

## NO COMPROMISES

- Fits full-sized kitchen appliances
- Solid pile foundation

- Drywall finish throughout
- Luxury vinyl plank flooring
- Custom cabinets with soft-close drawers
- Quality Kohler fixtures and Delta faucets

## PREMIUM EXTERIOR

- Low maintenance
- High-density wood fibre siding
- Covered front porch
- Composite decking
- 8'x10' storage shed included with lot



### OFFICE:

260 Glen Avenue  
Brandon, Manitoba R7C 1B9

PHONE: 204-726-3398

CELL: 204-724-7907

sales@glendalehomes.ca

